

POWER COMMANDER 6

Installation Guide for: PC6-29001

Model coverage: 2014-2020 Indian
Cruiser / Bagger / Touring models with TS111" engine

PARTS LIST

×

1	POWER COMMANDER 6	2	VELCRO STRIPS
1	INSTALLATION GUIDE	1	ALCOHOL SWAB
1	USB CABLE	1	POSI-TAP
2	DYNOJET DECALS	5	8" ZIP TIES
2	POWER COMMANDER DECALS	1	4" ZIP TIE

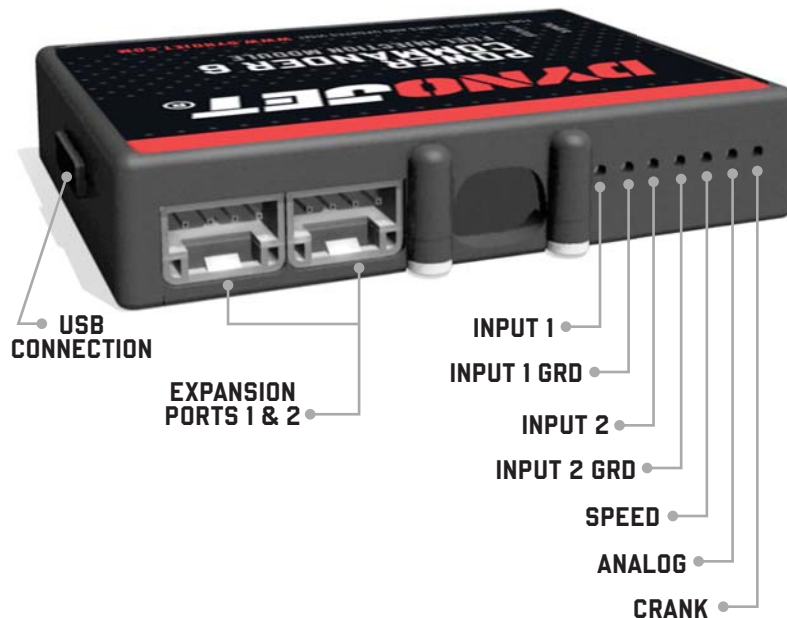
**PLEASE READ ALL DIRECTIONS BEFORE STARTING INSTALLATION.
THE IGNITION MUST BE TURNED OFF BEFORE INSTALLATION.**

×

 PC6-29001.01

**INDIAN
DYNOJET**

INPUT ACCESSORY GUIDE



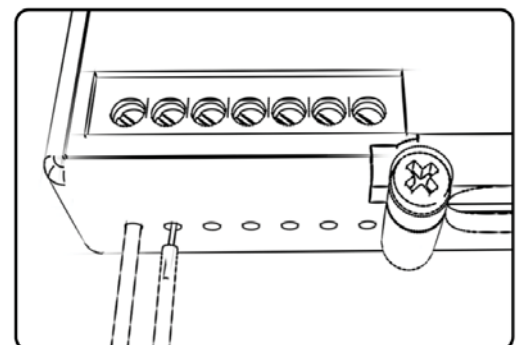
OPTIONAL ACCESSORY INPUTS

- Map** (Input 1 or 2) The PC6 has the ability to hold 2 different base maps. You can switch on the fly between these two base maps when you hook up a switch to the MAP inputs. You can use any open/close type switch. The polarity of the wires is not important.
- Shifter** (Input 1 or 2) Used for clutch-less full throttle upshifts. Insert the wires from the Dynojet quick shifter into either Input 1 or Input 2. The polarity of the wires is not important. Set to Input 2 by default.
- Speed** Not needed on Harley applications as the speed signal wire is built into the main wiring harness of the PC6.
- Analog** This input is for a 0-5v signal such as engine temp, boost, etc. Once this input is established you can alter your fuel curve based on this input in the Power Core software.
- Launch** You can connect a wire to either Input 1 or Input 2 and then the other end to a switch. This switch when engaged (continuity) will only allow the RPM to be raised to a certain limit (set in the software). When released, you will have full RPM.

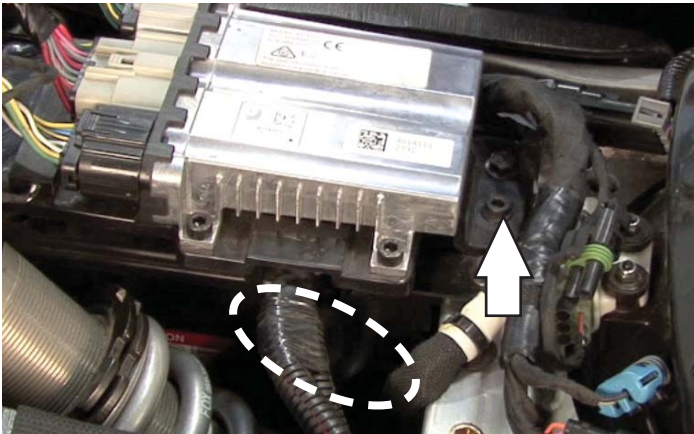
WIRE CONNECTIONS

To input wires into the PC6 first remove the rubber plug on the backside of the unit and loosen the screw for the corresponding input. Using a 22-24 gauge wire, strip about 10mm from its end. Push the wire into the hole of the PC6 until it stops and then tighten the screw. Make sure to reinstall the rubber plug.

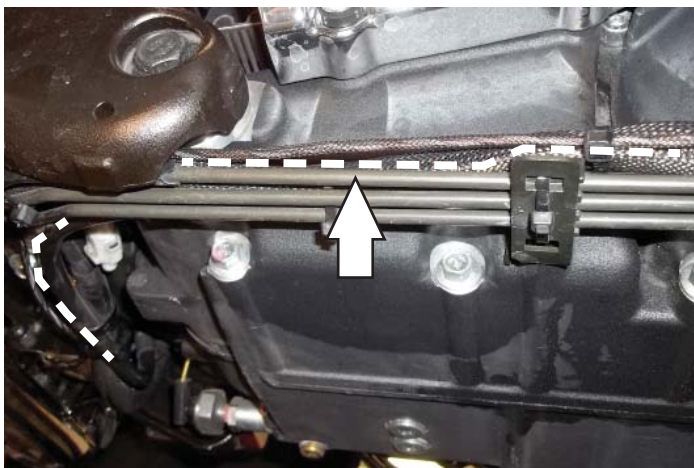
NOTE: If you tin the wires with solder it will make inserting them easier.



INSTALLING THE POWER COMMANDER 6



ROUTE HARNESS



ROUTE HARNESS



UNPLUG CPS

- 1 Remove the main seat and both side covers.
- 2 Remove the gauge cluster at the top of the fuel tank. Remove the fuel tank.
- 3 Loosen the electronic module from the top of the battery.

Remove the bolt shown in the picture. Push the module and bracket forward then upward.

- 4 From under the seat, route the PC6 wiring harness branch with the BROWN/WHITE and WHITE/BROWN wires through to the bottom of the bike going between the rear shock and battery.

This can be difficult. There is a hole in the frame below the shock that the connectors can pass through. Keep the wiring off of the shock and the exhaust pipe at the bottom of the bike.

- 5 Beneath the bike, continue routing this branch of the harness first to the right side of the bike then forward. Use the supplied zip ties to secure the wiring harness above and along the hydraulic brake lines.

Be sure to keep the wiring off of the hot exhaust and clear of any moving parts.

- 6 Locate and unplug the stock Crank Position Sensor connectors.

These connectors are located just above the hydraulic brake lines below the right side of the engine towards the front of the engine.

INSTALLING THE POWER COMMANDER 6

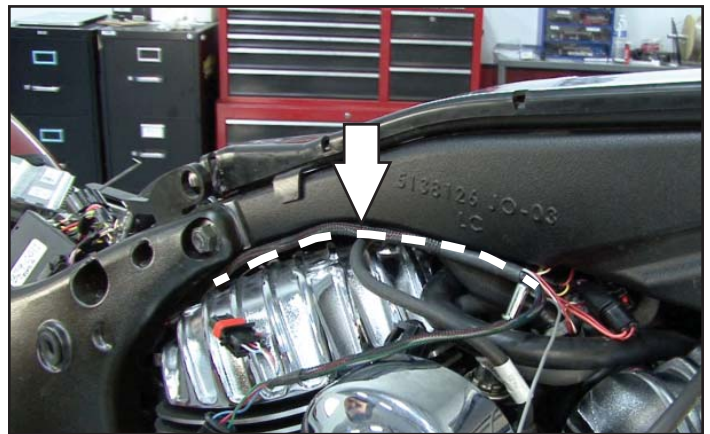
- 7 Plug the PC6 wiring harness in-line of the stock CPS connectors.

Use the zip ties to secure these connectors above the hydraulic brake lines. Be careful to secure these connectors and wiring such that it will stay off of the hot exhaust pipe.



CONNECT TO CPS

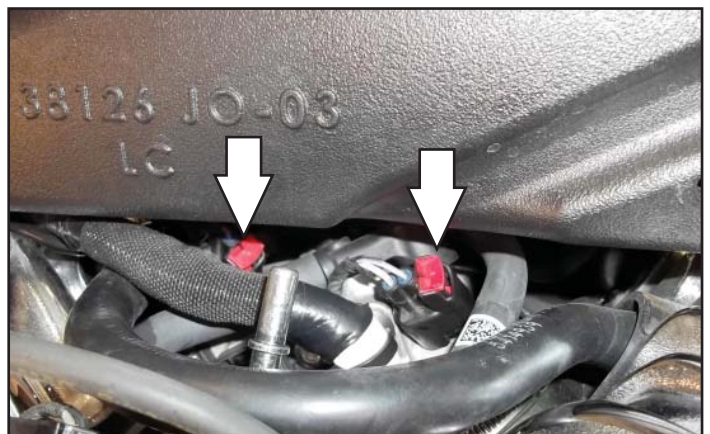
- 8 Route the other PC6 wiring harness branch forward towards the engine. Go through the opening in the frame directly in front of the battery, then over the top of the rear cylinder, between the rear cylinder valve cover and the frame, towards the fuel injectors located between the two cylinders under the frame.



ROUTE HARNESS

- 9 Locate and unplug the stock wiring harness from the front and rear Fuel Injectors.

First lift the small RED tab on the stock connectors. Then squeeze the connectors from the sides as you unplug them.



UNPLUG INJECTORS

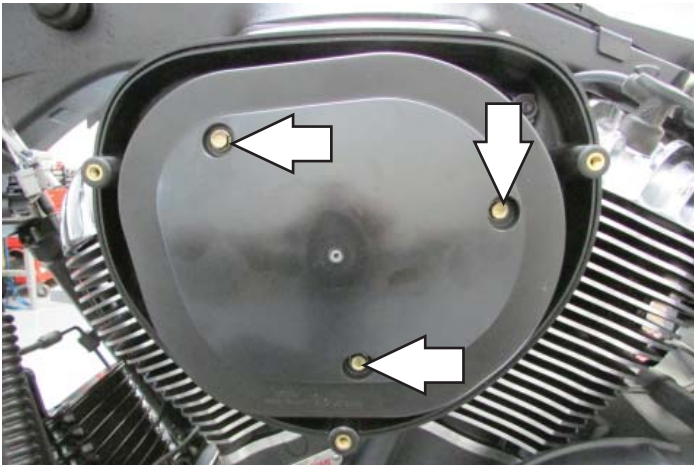
INSTALLING THE POWER COMMANDER 6



CONNECT TO INJECTORS

- 10 Plug the pair of PC6 connectors with YELLOW colored wires in-line of the Rear Cylinder Fuel Injector and the stock wiring harness.
- 11 Plug the pair of PC6 connectors with ORANGE colored wires in-line of the Front Cylinder Fuel Injector and the stock wiring harness.

It is easiest to make these connections from the right side of the bike.



REMOVE AIR FILTER

- 12 Remove the airbox cover.
The airbox is on the left side of the engine.
- 13 Remove the air filter.

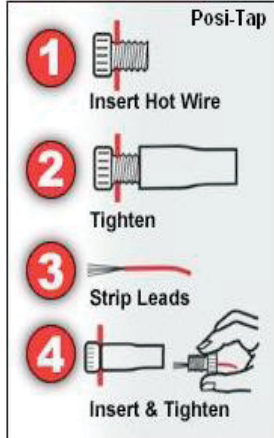


UNPLUG INJECTOR

- 14 Remove the air filter backing plate.
The 3rd bolt can not be seen in this picture, but it is in the vicinity of the small dashed circle.
The hole on the left side of the backing plate goes to an engine ventilation tube. Be sure the tube is reinstalled during reassembly.

INSTALLING THE POWER COMMANDER 6

- 15 Route the single GREY unterminated PC6 wire between the cylinders to the back of the airbox.
- 16 Push the GREY wire through the rubber grommet on the back of the airbox for the stock wiring.
- 17 Use the supplied Posi-tap to attach the PC6 GREY wire to the stock ORANGE/YELLOW wire on the throttle body servo connector.



- 18 Use the small supplied zip tie to secure the PC6 GREY wire to the stock wiring harness.
- 19 Secure the PC6 ground wire with the small ring lug to the negative (-) terminal of the bike's battery.
- 20 Reinstall the stock electronic module and its bracket on top of the battery.
- 21 Secure the PC6 module to the same bracket in front of the stock module and beneath the wiring to the stock module.

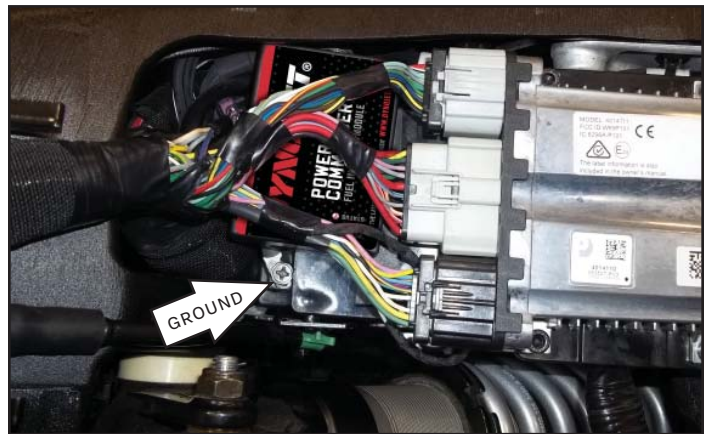
Use the supplied Velcro strips to secure the PC6 module. Clean the surface area with the supplied alcohol swab prior to applying the Velcro adhesive.

- 22 Reassemble the air box.
- 23 Reinstall the fuel tank, the gauge cluster, the seat, and side covers.

Download the latest map files from our web site at dynojet.com/tunes.



CONNECT TO TPS



INSTALL PC6



PUSH THE LIMIT

2191 MENDENHALL DRIVE, NORTH LAS VEGAS, NV 89081 - 800-992-4993 - DYNOJET.COM
© 2007-2022 DYNOJET RESEARCH ALL RIGHTS RESERVED