

# POWER COMMANDER 6

Installation Guide for: PC6-29003

Model coverage: 2017-2020 Indian  
Scout Sixty models with 60"engine

## PARTS LIST

×

- |   |                        |   |               |
|---|------------------------|---|---------------|
| 1 | POWER COMMANDER 6      | 2 | VELCRO STRIPS |
| 1 | INSTALLATION GUIDE     | 1 | ALCOHOL SWAB  |
| 1 | USB CABLE              | 1 | POSI-TAP      |
| 2 | DYNOJET DECALS         | 1 | ZIP TIE       |
| 2 | POWER COMMANDER DECALS |   |               |

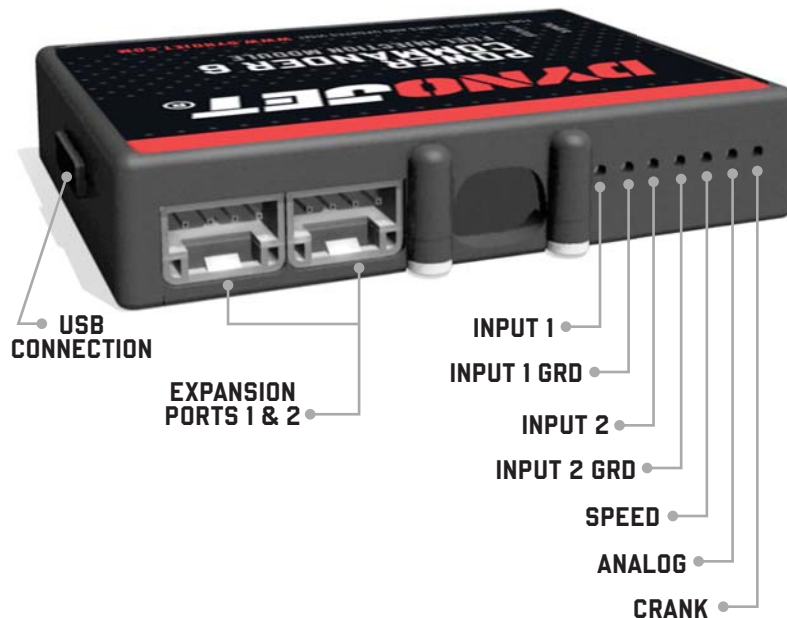
**PLEASE READ ALL DIRECTIONS BEFORE STARTING INSTALLATION.  
THE IGNITION MUST BE TURNED OFF BEFORE INSTALLATION.**

×

 PC6-29003.01

**INDIAN  
SCOUT  
SIXTY**

# INPUT ACCESSORY GUIDE



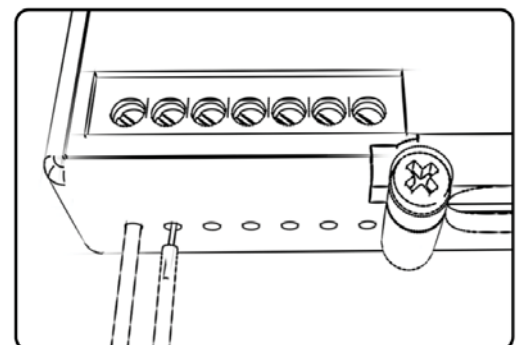
## OPTIONAL ACCESSORY INPUTS

- Map** (Input 1 or 2) The PC6 has the ability to hold 2 different base maps. You can switch on the fly between these two base maps when you hook up a switch to the MAP inputs. You can use any open/close type switch. The polarity of the wires is not important.
- Shifter** (Input 1 or 2) Used for clutch-less full throttle upshifts. Insert the wires from the Dynojet quick shifter into either Input 1 or Input 2. The polarity of the wires is not important. Set to Input 2 by default.
- Speed** Not needed on Harley applications as the speed signal wire is built into the main wiring harness of the PC6.
- Analog** This input is for a 0-5v signal such as engine temp, boost, etc. Once this input is established you can alter your fuel curve based on this input in the Power Core software.
- Launch** You can connect a wire to either Input 1 or Input 2 and then the other end to a switch. This switch when engaged (continuity) will only allow the RPM to be raised to a certain limit (set in the software). When released, you will have full RPM.

## WIRE CONNECTIONS

To input wires into the PC6 first remove the rubber plug on the backside of the unit and loosen the screw for the corresponding input. Using a 22-24 gauge wire, strip about 10mm from its end. Push the wire into the hole of the PC6 until it stops and then tighten the screw. Make sure to reinstall the rubber plug.

NOTE: If you tin the wires with solder it will make inserting them easier.



# INSTALLING THE POWER COMMANDER 6



REMOVE BODYWORK

- 1 Remove the seat, the fuel tank, and the cosmetic cover on the right side of the engine.
- 2 Remove the bracket behind the cover on the right side of the engine that holds the thermostat housing.

*This will help you access the fuel injector for the front cylinder.*



ROUTE HARNESS

- 3 From under the seat, route the PC6 wiring harness branch with the pair of 3-pin connectors downward straight-through to the bottom of the bike. There is a space in front of the rear fender on the right side of the bike that the connectors can pass through. Be sure to route these connectors in front of the swingarm and all the way down to the regulator/rectifier.



UNPLUG CPS

- 4 Locate and unplug the stock Crank Position Sensor connectors.

*This is a BLACK 3 pin connector located underneath the motorcycle, towards the front of the swingarm.*

# INSTALLING THE POWER COMMANDER 6

- 5 Plug the PC6 wiring harness in-line of the stock CPS connectors.
- 6 Use the supplied zip-tie to secure these connectors to the regulator/rectifier bracket. Secure these connectors as high up as possible.



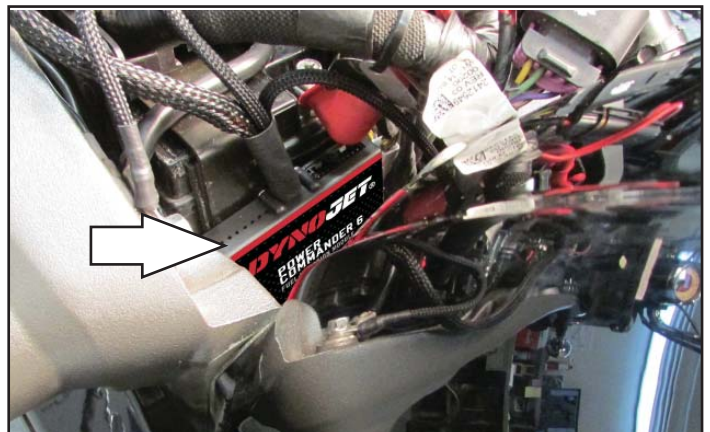
CONNECT TO CPS

- 7 Attach the PC6 ground wire with the small ring lug to the common ground bolt inside the left frame rail.



ATTACH TO GROUND

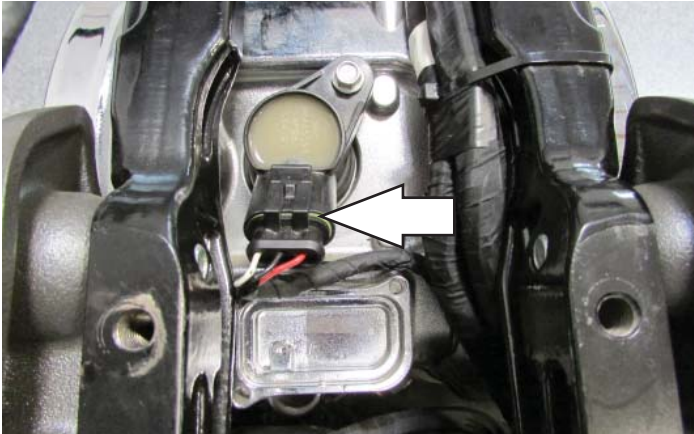
- 8 Use the supplied Velcro to secure the PC6 module under the seat to the back side of the bike's battery.
- 9 Route the main wiring harness branch of the PC6 forward towards the engine following inside the left frame rail.



INSTALL PC6

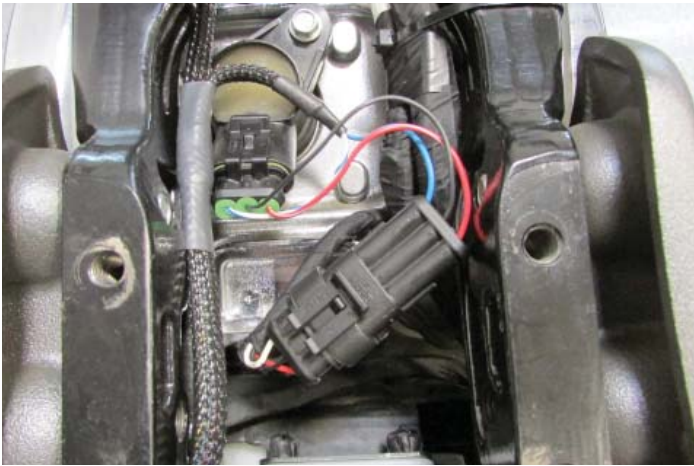


# INSTALLING THE POWER COMMANDER 6



UNPLUG REAR COIL

- 10 At the top of the rear cylinder head, unplug the stock wiring harness from the REAR Ignition Coil.



CONNECT TO COIL

- 11 Plug the pair of PC6 leads with the BLUE colored wires in-line of the REAR Ignition Coil and the stock wiring harness.



UNPLUG INJECTOR

- 12 Locate the REAR Fuel Injector and unplug the stock wiring harness from it.

*To unplug it, first lift up on the small red tab. Then squeeze the connector beneath the red tab while pulling it off of the injector.*

# INSTALLING THE POWER COMMANDER 6

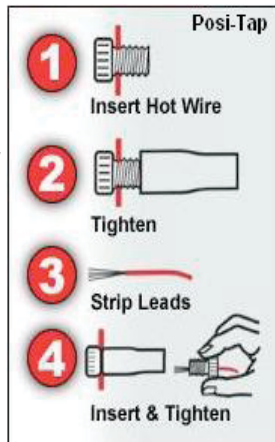
- 13 Plug the pair of PC6 leads with the YELLOW colored wires in-line of the REAR Fuel Injector and the stock wiring harness.



CONNECT TO RR INJECTOR

- 14 Using the supplied Posi-Tap, attach the single unterminated GREY wire of the PC6 wiring harness to the stock ORANGE/YELLOW wire of the Throttle Body Servo connector.

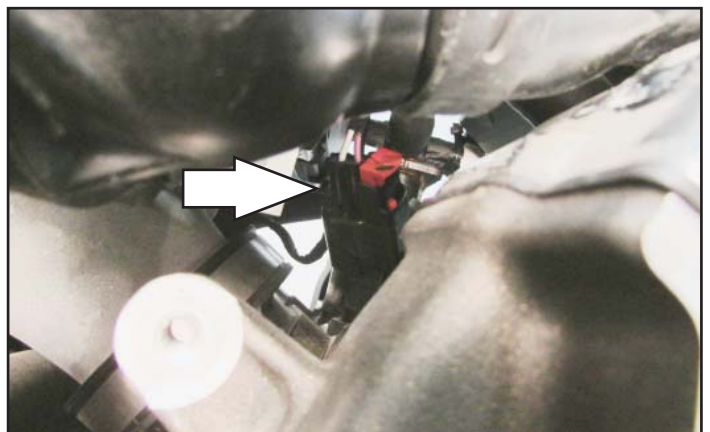
*This connector is located on the left side of the throttle body. Temporarily unplugging this connector might make it easier to attach the PC6 GREY wire.*



CONNECT TO TPS

- 15 Locate and unplug the stock wiring harness from the FRONT Fuel Injector.

*This injector might be difficult to access. From the right side of the bike, pull the thermostat housing and the radiator hose that routes over the top of the front cylinder head downward. This will make access to it much easier.*



INSTALL PC6

# INSTALLING THE POWER COMMANDER 6



CONNECT TO FRT INJECTOR

- 16 Plug the pair of PC6 leads with ORANGE colored wires in-line of the FRONT Fuel Injector and the stock wiring harness.



UNPLUG FRT COIL

- 17 At the top of the front cylinder head, unplug the FRONT Ignition Coil.

*This coil is most easily accessed from the left side of the bike. There is a rubber hose routed over the top of the valve cover on the left side of the front cylinder head. Pull it outward to gain access to this coil connection.*



CONNECT TO COIL

- 18 Plug the pair of PC6 leads with GREEN colored wires in-line of the FRONT Ignition Coil and the stock wiring harness.
- 19 Reinstall the mounting bracket for the thermostat housing, the chrome cover, the fuel tank, and the seat.

For more information or tunes go to [www.dynojet.com](http://www.dynojet.com)





# **PUSH THE LIMIT**

**2191 MENDENHALL DRIVE, NORTH LAS VEGAS, NV 89081 - 800-992-4993 - DYNOJET.COM**

**© 2007-2022 DYNOJET RESEARCH ALL RIGHTS RESERVED**